



Be better with us

Sturdy, Simple & Splendid

Q30



# SG HealthCare Q30

Q30 offers value added performance, flexible configuration and compact design to meet with varied clinical requirements. Its simplicity and mobility make you good alignment with narrow space.

- »Innovation platform, State of art technology
- »Super image quality, Smart experience
- »Slim and compact design, High efficient connectivity

48 physical channel

Fixed panel

2 probe connectors



## Core Technology

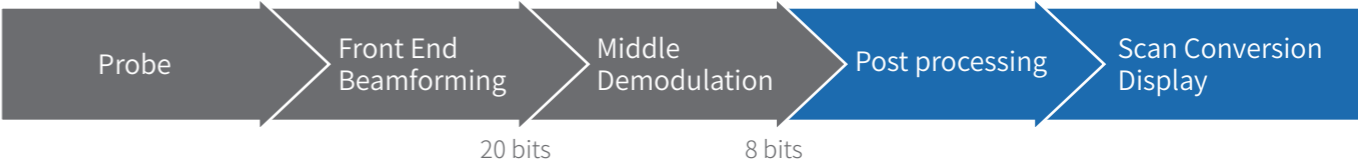
Q30 transplants SG HealthCare's core technology RF platform into a slim and compact design concept.

Due to the outstanding signal process technology, it delivers clear image quality. Slim body, light weight and small footprint make it ideal for small space and more mobility.

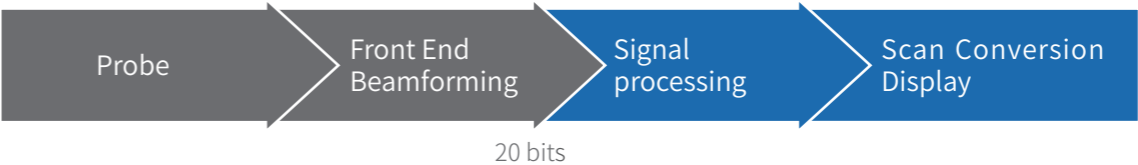
- ✓ Bigger data to compute for better image quality
- ✓ Non-linear demodulation to strong signal
- ✓ More accurate and higher step calculation
- ✓ Processing algorithm based on signal data, not image data
- ✓ Flexible algorithm on data processing

■ : Hardware ■ : Software

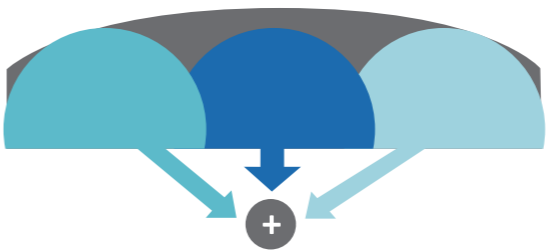
Traditional Ultrasound Platform — Image data processing platform



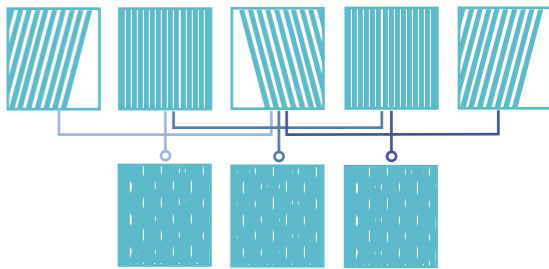
Innovative RF Ultrasound Platform  
RF signal data processing platform for better resolution and definition



Frequency Compound Imaging



Spatial Compound Imaging

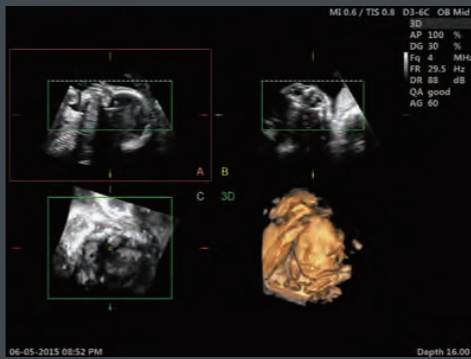


# Powerful Function

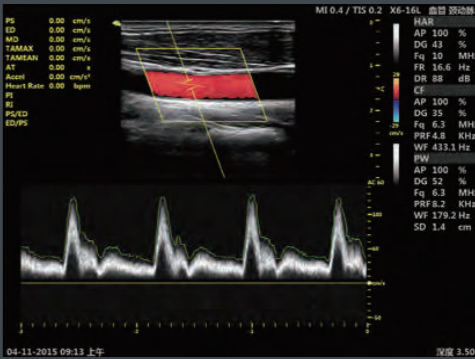
Q30 offers you a lot of convenient and fast operation and measurement tools which make you daily work efficient and comfortable.

SG HealthCare focuses on your requirement and always brings you more useful solution.

- » Triplex
  - » Auto Optimization
  - » Easy Compare
  - » Full Screen
- » Preview
  - » Needle Enhancement
  - » Smart 3D/4D Function
  - » Auto Measurement  
(Auto IMT / Auto NT / Auto PW / CW trace)



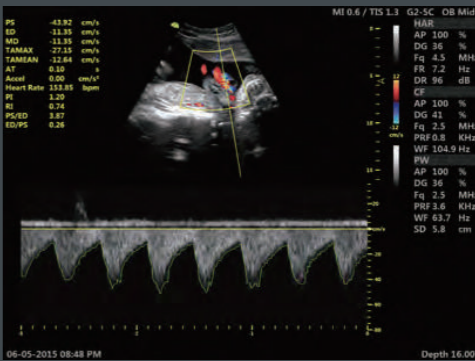
24 weeks fetal face-4D mode



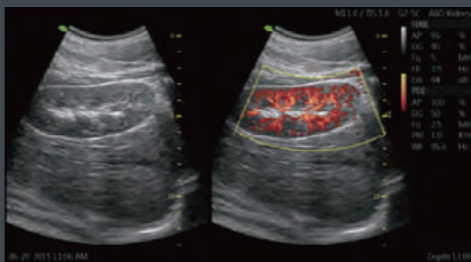
carotid-PW mode, Auto trace



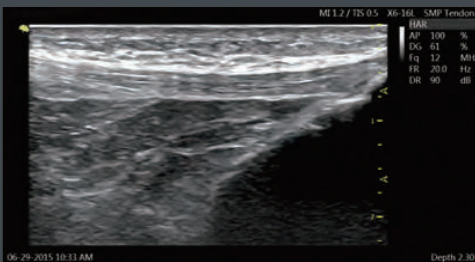
liver-B mode



umbilical cord-PW mode



kidney-dual synchronize mode



patella tendon-B mode

# Slim Compact Design

- » 19 inch professional LED monitor gives you more clear view
- » 10 inch smart touch panel enables the operation more convenience
- » Pinless and flat probe connection make you more comfortable
- » 500G HDD (big enough for volume data storage)
- » B/W video printer slot



Fast Connectivity  
Bluetooth / Wireless / DICOM3.0



 **Bluetooth™**

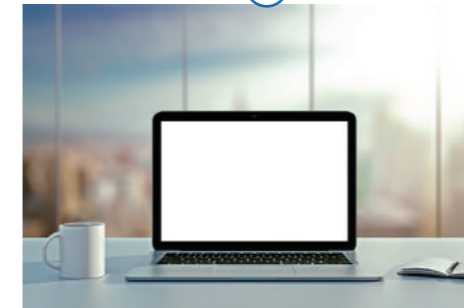


Image post process, synchronization  
with your mobile phone



